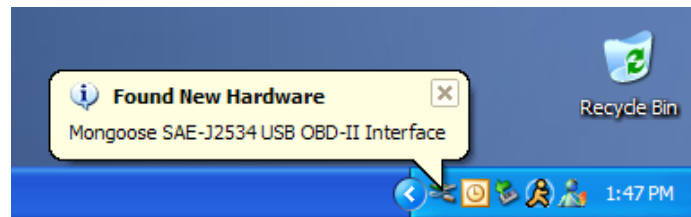


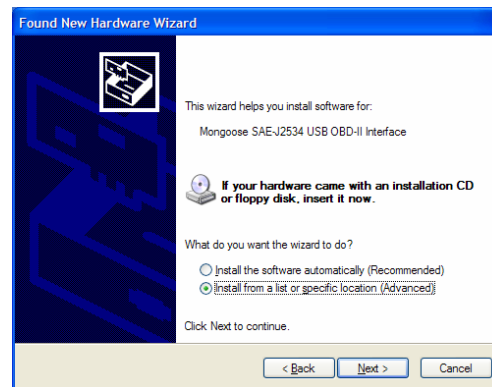
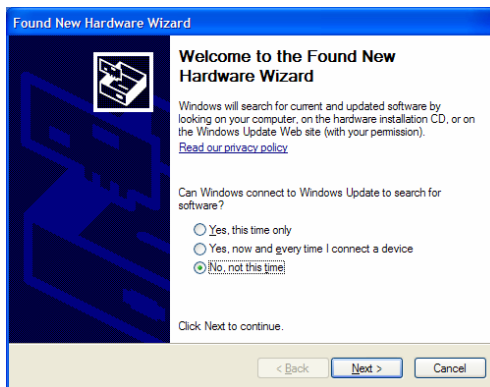
Mongoose ISO/CAN

Please follow these steps to setup the drivers and software:

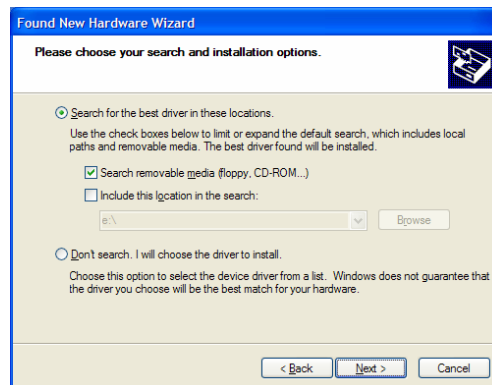
1. Connect the Mongoose cable to a USB port on your PC. Windows will detect the Mongoose automatically by plug-and-play



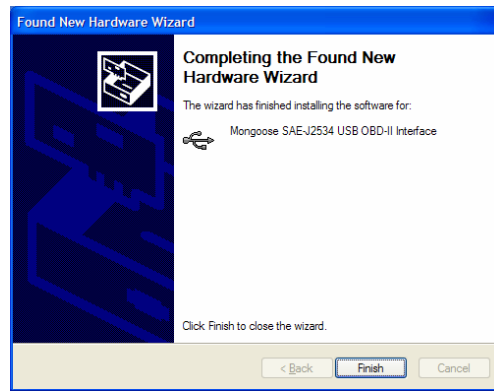
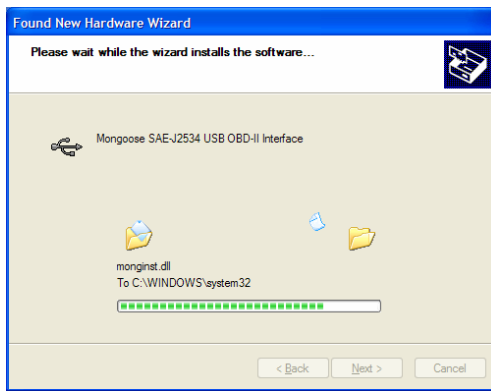
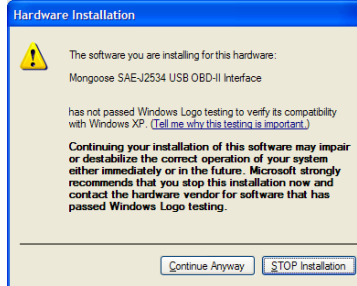
2. The *Found New Hardware Wizard* will pop-up automatically. Select “No, not this time” and click next. Then click “Install from a list of specific location” and click next.



3. Insert the Mongoose drivers CD, make sure “Search removable media” is selected, and click next.



4. The *Found New Hardware Wizard* will install all necessary drivers. A dialog box may pop-up to indicate that Mongoose has not passed Windows Logo testing. Click “Continue Anyway”.



Mongoose supports J2534 (Feb 2002) and J2534-1 (Dec 2004), and we add keys to the Windows registry for both standards. To use the DLLs directly, please refer to:

Reference	Version	File Location
J2534	02.02 (Feb 2002)	C:\windows\system32\mong232.dll
J2534-1	04.04 (Dec 2004)	C:\windows\system32\mong432.dll

Please note: Although the driver works on Windows 98, the first release of our installer is incompatible with Windows98.

If you have any questions please contact Drew Technologies at:

WWW: www.drewtech.com
 Email: support@drewtech.com
 Phone: 810-231-3171
 Fax: 810-231-8902